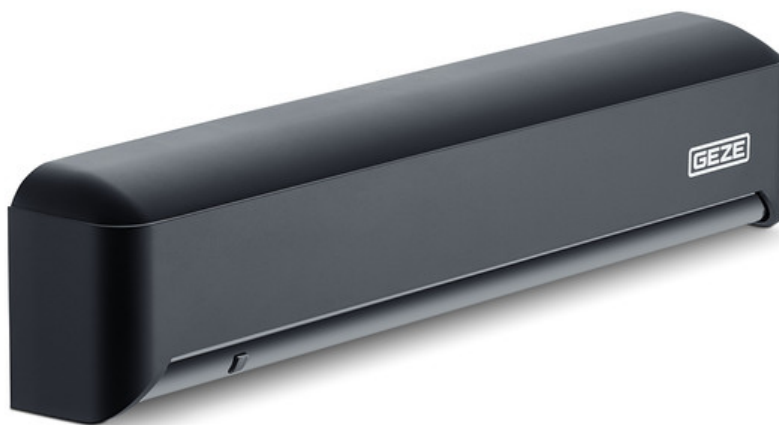


# Product data sheet

## GC 341 \*



Safety sensor for automatic doors

### AREAS OF APPLICATION

- Protection of automatic sliding doors
- Automatic sliding doors without protective leaves to protect the secondary closing edge
- Interior and exterior doors

**PRODUCT FEATURES**

- Reliable detection up to an installation height of 3500 mm
- Four adjustable light curtain configurations without additional light prisms
- Convenient commissioning via dip switch

**TECHNICAL DATA**

Productname	GC 341 *
Dimensions	267 x 61 x 38 mm
Technology	Active infrared beams
Number of active infrared detectors	2
Operating voltage	12-30 V DC / 12-24 V AC
Operating current	100 mA
IP rating	IP54
Cable connection type	System plug-type connector
Connector cable length	3000 mm
Installation height (min.)	2000 mm
Installation height (max.)	3500 mm
Service temperature	-20 - 55 °C
Humidity	< 80 % relative, non-condensing
Standard conformity	DIN 18650, EN 16005

**VARIANTS / ORDER INFO**

Designation	Description	Ident-No.	Colour	Dimensions	Operating voltage
GC 341 *	Safety sensor for automatic doors	160285	black	267 x 61 x 38 mm	24 V DC

**ACCESSORIES****CEILING INSTALLATION KIT GC 365 / GC 341**

Installation kit for attaching the detector to the ceiling



Designation	Description	Ident-No.	Colour	Dimensions
Ceiling installation kit GC 365 / GC 341	Installation kit for integrating the detector in the ceiling	160288	black	328 x 48 x 51 mm

**WEATHER HOOD GC 365 / GC 341**

Protects the sensor when installed outdoors



Designation	Description	Ident-No.	Colour	Dimensions
Weather hood for GC 365 / GC 341	Protection against precipitation in outdoor use	160287	black	325 x 69 x 71 mm

**CEILING BRACKET GC 365 / GC 341**

For attaching the sensor to the ceiling



Designation	Ident-No.	Colour
Ceiling bracket GC 365 / GC 341	160286	black

\* The products designated above may vary in form, type, characteristics, function, or availability depending on the country. Please get in touch with your GEZE contact person if you have any questions.